

# VersiColor™ RGB LED Flexible Light

## Product Details

- Ability to change colors instantly with a simple controller interface
- RGB chips provide an endless amount of color combinations
- IP66 rating allows for installation in exterior or wet locations
- Available in diffused or clear silicone
- Flexibility allows for installation in curved applications as well as straight mount applications

## Part Numbers

- TPB1206.50012-10 : 12V Clear  
 RBLL1208.67012-12-A : 12V Clear Sealed, Reduced Power  
 RBLL1206.67012-12-A : 12V Clear Sealed  
 RNLL1206.11812-10 : 12V Thin Diffused Sealed  
 RNLL1206.20012-17 : 12V Diffused Sealed



(Diffused style - RNLL, shown above)



TPB Clear Silicone



RBLL Clear Sealed Silicone



RNLL Diffused Sealed Silicone

## Product Details

RGB Type	12V Clear	12V Clear Sealed, Reduced Power	12V Clear Sealed	12V Thin Diffused Sealed	12V Diffused Sealed
Housing Material	Silicone Casing	Silicone Casing	Silicone Casing	Silicone Mist Casing	Silicone Mist Casing
Profile Dimensions	0.32" x 0.1"	0.5" x 0.2"	0.5" x 0.2"	0.4" x 0.5"	0.66" x 0.55"
Total Wattage	3 Watts/Ft (10 Watts/Meter)	1.4 Watts/Ft (4.7 Watts/Meter)	3 Watts/Ft (10 Watts/Meter)	6.1 Watts/Ft (20 Watts/Meter)	4.3 Watts/Ft (14.2 Watts/Meter)
Voltage	13.6V DC	13.6V DC	13.6V DC	13.6V DC	13.6V DC
Current	0.2 Amp/Ft* (0.64 Amp/Meter)	0.1 Amp/Ft* (0.34 Amp/Meter)	0.2 Amp/Ft* (0.64 Amp/Meter)	0.5 Amp/Ft (1.6 Amp/Meter)	0.3 Amp/Ft (1 Amp/Meter)
Lumen Output	82 Lm/Ft (270 Lm/Meter)	46 Lm/Ft (151 Lm/Meter)	82 Lm/Ft (270 Lm/Meter)	107 Lm/Ft (351 Lm/Meter)	92 Lm/Ft (303 Lm/Meter)
LED Color	RGB	RGB	RGB	RGB	RGB
Cut Line Increment	2" (5 cm)	2" (5cm)	2" (5 cm)	1" (2.54 cm)	2" (5 cm)
Available Lengths	16.4 Ft (5 Meters)	20 Ft (6.7 Meters)	20 Ft (6.7 Meters)	9.8 Ft (3 Meters)**	16.7 Ft (5.1 Meters)
Wire Size	22 AWG	22 AWG	22 AWG	22 AWG	22 AWG
LED Count	18 per foot	13 per foot	18 per foot	36 per foot	37 per foot
Beam Angle	120°	120°	120°	120°	120°
IP Rating	IP62	IP66 Sealed	IP66 Sealed	IP66 Sealed	IP66 Sealed
UV	UV Stable	UV Stable	UV Stable	UV Stable	UV Stable

\*Note, to protect against voltage fluctuations, estimate 0.3 Amps/Ft (1 Amp/Meter) when using VersiColor with RGB controllers  
 \*\* Longer lengths available depending on application. Contact sales for more information.

Luna Patent Numbers: 9,695,991 | 2,861,157 | 9,909,719

## Specification Guide:

Sample Part #: RNLL1206.20012-17

Silicone Type .....  
 Voltage .....  
 Light Style .....  
 Roll Length .....  
 Wire Length .....  
 Flex Light Width .....

**A** Determine the style of light needed

Silicone Type	Voltage	Style	Roll Length	Wire Length	Flex Light Width
TPB - Clear	12 - 12V	06 - RGB	500 - 500 cm (16.4 Ft)	12 - 12 in	10 - 10 mm
RBLL - Clear Sealed, Reduced Power	12 - 12V	08 - RGB	670 -670 cm (20 Ft)	12 - 12 in	12-A - 12 mm
RBLL - Clear Sealed	12 - 12V	06 - RGB	670 - 670 cm (20 Ft)	12 - 12 in	12-A - 12 mm
RNLL - Thin Diffused Sealed	12 - 12V	06 - RGB	183 - 183 in (4.7 Meters)	12 - 12 in	10 - 10 mm
RNLL - Diffused Sealed	12 - 12V	06 - RGB	200 - 200 in (5.1 Meters)	12 - 12 in	17 - 17 mm

**B** Determine which mounting channel is needed

Sample Part #: RNLL17-6T

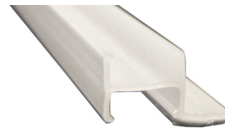
Compatible Light Type .....  
 Track Width .....  
 Color & Mounting Type .....



White Plastic



Aluminum



Dual Channel Side View



Black Plastic



White Plastic Dual Mount



**RNLL-RGB-SS-CAP**  
End caps for RNLL thin diffused sealed

Track Type	TPB10 Standard	RNLL10 Diffused Sealed	RBLL10 Clear	RBLL12 Clear Sealed	RNLL17 Diffused Sealed
LS - Black Plastic Screw Mount	√			√	
LT - Black Plastic Adhesive Mount	√			√	
6T - Black Plastic Dual Track Adhesive Mount				√	
6T - Black Plastic Adhesive Mount					√
5T - White Plastic Dual Track Adhesive Mount				√	
KS - White Plastic Screw Mount	√	√	√	√	
KT - White Plastic Adhesive Mount	√	√	√	√	
ET - Aluminum 45° Tape on Both Sides	√	√	√		
FT - Black Aluminum 45° Tape on Both Sides	√	√	√		
3S - Aluminum Screw Mount				√	√
7T - Aluminum Adhesive Mount				√	√
8T - Aluminum Screw Mount					√

Note, the width of the VersiColor flexible light corresponds with the width of the track, these widths must match for proper installation.